

NET SECTION LEARNING HUBS 2024-25

INNOVATIVE STRATEGIES

Multicultural Language Arts Learning Hub

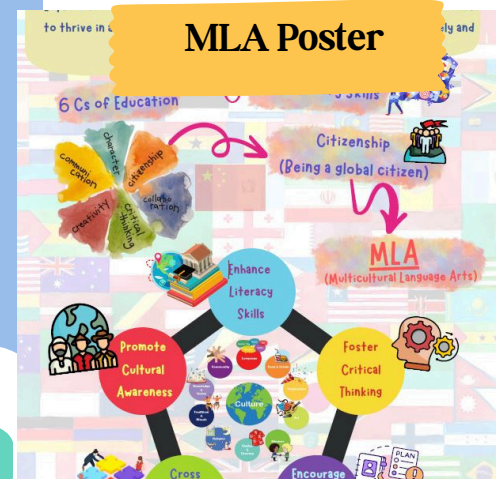
Welcome to the First MLA Learning Hub Event

The Multicultural Language Arts Learning Hub (MLA LH) successfully held its inaugural event on 19 October 2024 at the EDB Kowloon Tong Education Services Centre. This Hub provided teachers with a valuable opportunity to connect, exchange teaching ideas, discuss challenges, and explore potential solutions.

MLA



MLA Poster



About the Event

The MLA LH team began the session by outlining the rationale behind the MLA Learning Hub. They emphasised how the implementation of MLA concepts can enhance students' learning experiences. These concepts support a range of strategies aimed at improving literacy skills through engaging content, fostering critical thinking, promoting cultural awareness, exploring reflective practices, and facilitating cross-curricular collaboration, all of which are integral to enhancing the learning and teaching of English.



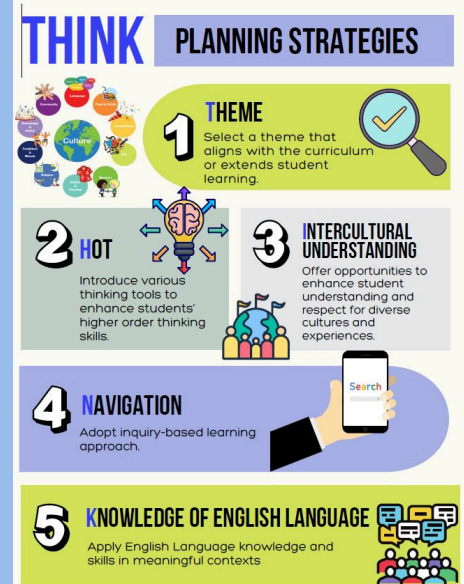
Event Highlights

Experienced educators from HHCKLA Buddhist Ching Kok Lin Association School presented their successful implementation of the MLA unit. This session provided participants with some valuable insights into effectively integrating MLA concepts in the classroom, thereby fostering 21st-century learning skills and broadening global perspective.

The MLA LH team shared an MLA poster, an action plan and the planning tool (THINK) with the participants and guided them to plan how the MLA concepts can be integrated into their school English curriculum. The sharing was well received by the participants.



Planning tool



Action Plan

★ Integrating MLA into your current English curriculum will enhance students' intercultural understanding and enable them to become responsible global citizens.

Arts (MLA)

GE / CCA ENG	Year Level (s) 3 4 5 6
Theme/Unit	Existing school-based resources
No. of lessons / hours 1 2 3 4	Cross-curricular collaboration
Planned school events	Other resources you might need

Key documents for reference:
• GE textbook / school based resources
• Annual English Programme Plan / Scheme of Work

Anticipated Challenges:

